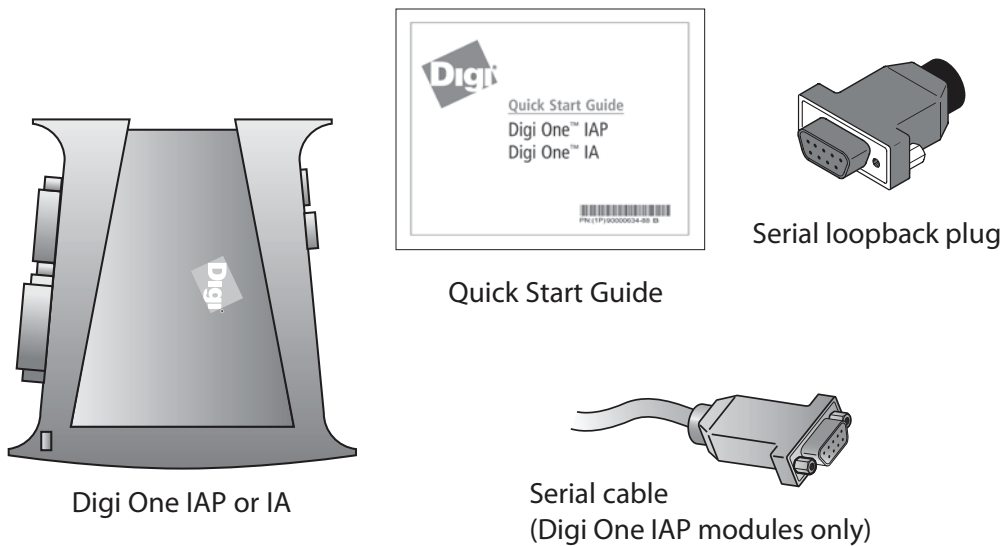


# 1 Verify Kit Contents



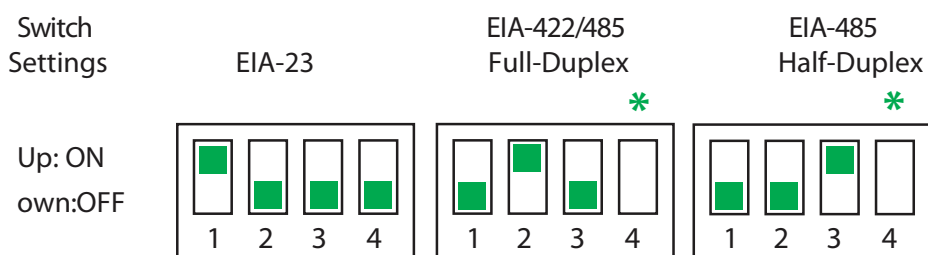
## Quick Start Guide

Digi One™ IAP  
Digi One™ IA  
Digi One™ IAP HAZ

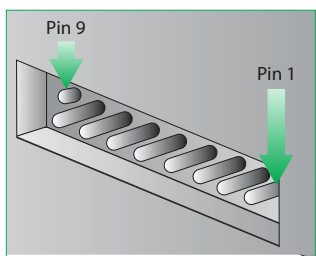
90000634\_E

# 2 Set the DIP Switch or Screw-terminal Pins

**a** Set serial DIP switch according to your serial device requirements (EIA-232/422/485). Pinouts are on the back of the device.

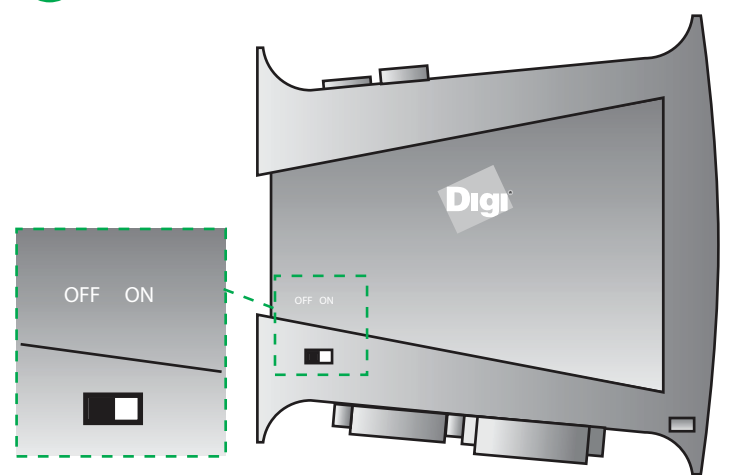


\*If switch 4 is up, termination resistor is connected.  
If down, termination resistor not connected.



DB9	RS232	RS422/485 Full-Duplex	RS485 Half-Duplex	Screw Term
2	RxD	RxD+	RxD+	6
3	TxD	TxD+	TxD+	3
7	RTS	RTS+	not used	1
8	CTS	CTS+	not used	8
5	GND	GND	GND	5
6	DSR	RxD-	RxD-	7
1	DCD	CTS-	not used	9
4	DTR	RTS-	not used	2
9	NA	TxD-	TxD-	4

**b** Digi One IAP only: Set pass-through settings.



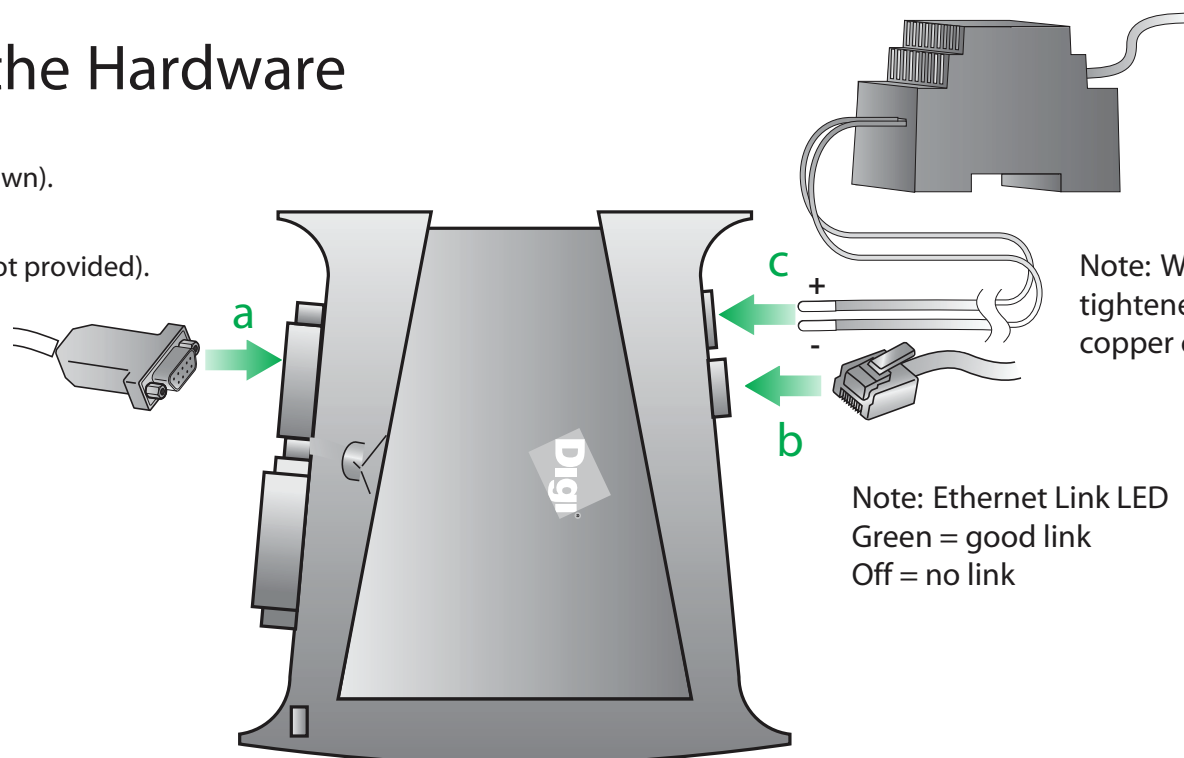
Switch Position	Port 1 Screw Term	Port 2 DB9	Flow Control
ON	Follows switch (232/422/485)	RS232 only	Hardware flow control supported
OFF	Follows Switch (232/422/485)	Follows Switch (232/422/485)	Hardware flow control supported

# 3 Connect the Hardware

**a** Connect serial cable (DB-9 shown).

**b** Connect the Ethernet cable (not provided).

**c** Connect the power source.



Note: Wiring terminals should be tightened to 5 inches-pounds. Use copper conductors only.

Note: Ethernet Link LED  
Green = good link  
Off = no link

# 4 What's Next?

Navigate to the Digi Support site, which can be found at: [www.digi.com/support/productdetail?pid=1908](http://www.digi.com/support/productdetail?pid=1908) to download the necessary drivers and utilities. You will also find additional documentation, including knowledge-base articles for further reference.